

BILL OF MATERIALS

ITEM NUMBER	Description	Quantity
1	1-1/2" Quick Seal	1
2	1-1/2" x 4" Nipple	1
3	1-1/2" 90° Elbow	5
4	1-1/2" x 1-1/2" Nipple	12
5	1-1/2" Union	4
6	1-1/2" x 1-1/2" x 1/2" Tee	3
7	1/4" Square Head Pipe Plug	2
8	1-1/2" K3A682T Solenoid Valve	1
9	1-1/2" V4055A1007 Hydraulic Actuator and V5055A1020 Valve	1
10	1-1/2" x 2-1/2" Nipple	3
11	Maxitrol 1-1/2" MR212D Modulating Valve	1
12	1/2" Male x 1/4" Female Reducer	2
13	1-1/2" Manual Ball Valve	1
14	1-1/2" x 10" Nipple	1
15	1-1/2" x 1-1/2" x 1-1/2" Tee	1
16	1-1/2" x 4" Nipple	2
17	1-1/2" Female x 2" Male Adapter	2
18	60" Dual Fuel Midco Burner	1
19	N/A	N/A
20	N/A	N/A
21	1/4" Brass Elbow	1
22	3/8" Male x 1/4" Female Reducer	1
23	325-3x3/8 Pilot Gas Regulator	1
24	3/8" 90° Elbow	1
25	3/8" Close Nipple (1-1/2")	1
26	3/8" x 2" Nipple	1
27	3/8" Pilot Shut Off Valve	1
28	1/2" Male x 3/8" Female Reducer	1
29	3/8" x 3" Nipple	1
30	Pyroseal Furnace Cement (AX # 2220)	

NOTES:

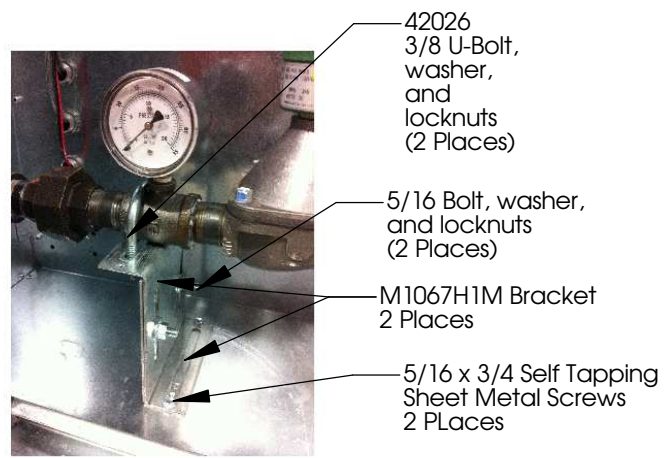
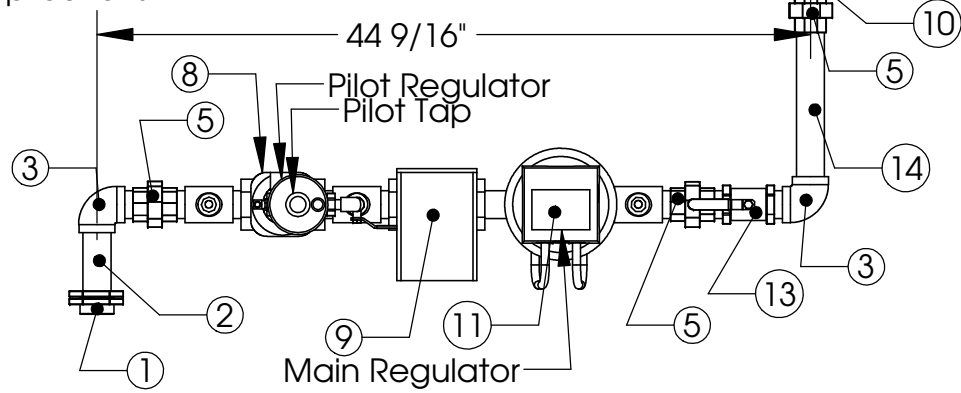
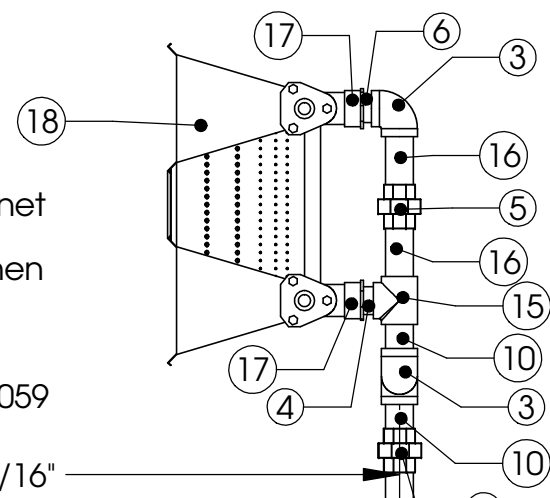
Gas Type: Natural or LP
 Inlet Pressure: 7 in. w.c. - 5 psi.
 Max. Natural Gas Manifold Pressure: 5 in. w.c.
 Max. LP Manifold Pressure: 2.5 in. w.c.

External Ball Valve Shipped Loose in Control Cabinet

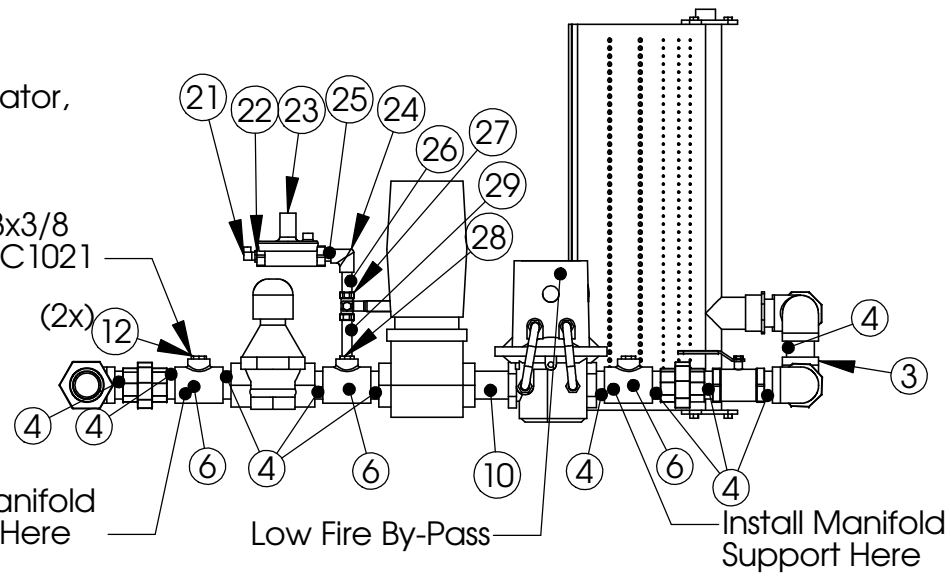
External High Gas Pressure Regulator Required when gas pressure exceeds 5 psi.:
 P/N = 243-8-2-1.5-OR-1-30 (25 psi. max.)

Item # 9 is replaced by V4055D1019 and V5055C1059 for Proof of Closure Applications

Item # 30 (not shown) used for burners built in house.



Pilot Solenoid, Regulator, & Manual Valve Location for MN State Requirements
 Regulator P/N: 325-3x3/8
 Solenoid P/N: V4046C1021



Notes:
 1) Burners riveted together with 3/16" rivets.
 2) Burner Cement used at all casting joints only.

Material: N/A	Part Number: N/A	Unless Otherwise Specified Dimensions are in Inches.
Blank Size: N/A x N/A	MACOLA/AX Number:	
Weight: N/A lbs	Drawing Name: DF 5 60 Inch Gas Train	
CONFIDENTIAL	Drawn By:	
	Parent Assembly: DF 5	
	Sheet: 1 of 2	Standard Tolerances are: Fractions: ±1/16 Decimal: .XX±.05 .XXX±.015 Angles: ±1°

BILL OF MATERIALS

ITEM NUMBER	Description	Quantity
1	1-1/2" Quick Seal	1
2	1-1/2" x 4" Nipple	1
3	1-1/2" 90° Elbow	5
4	1-1/2" x 1-1/2" Nipple	12
5	1-1/2" Union	4
6	1-1/2" x 1-1/2" x 1/2" Tee	3
7	1/4" Square Head Pipe Plug	2
8	1-1/2" K3A682T Solenoid Valve	1
9	1-1/2" V4055A1007 Hydraulic Actuator and V5055A1020 Valv	1
10	1-1/2" x 2-1/2" Nipple	3
11	Maxitrol 1-1/2" MR212D Modulating Valve	1
12	1/2" Male x 1/4" Female Reducer	2
13	1-1/2" Manual Ball Valve	1
14	1-1/2" x 10" Nipple	1
15	1-1/2" x 1-1/2" x 1-1/2" Tee	1
16	1-1/2" x 4" Nipple	2
17	1-1/2" Female x 2" Male Adapter	2
18	60" Dual Fuel Midco Burner	1
19	1/4" x 4" Nipple	4
20	1/4" x 1/4" x 1/4" Tee	2
21	1/4" Brass Elbow	1
22	3/8" Male x 1/4" Female Reducer	1
23	325-3x3/8 Pilot Gas Regulator	1
24	3/8" 90° Elbow	1
25	3/8" Close Nipple (1-1/2")	1
26	3/8" x 2" Nipple	1
27	3/8" Pilot Shut Off Valve	1
28	1/2" Male x 3/8" Female Reducer	1
29	3/8" x 3" Nipple	1
30	Optional Antunes HGP-A M1 Pressure Sw itch	1
31	Optional Antunes LGP-A M1 Pressure Sw itch	1
32	Pyroseal Furnace Cement (AX # 2220)	

NOTES:

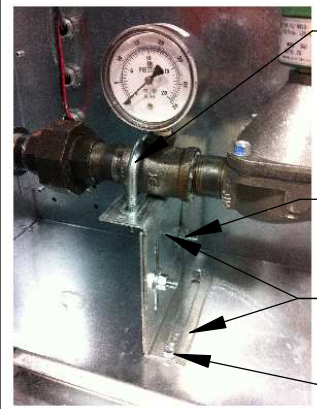
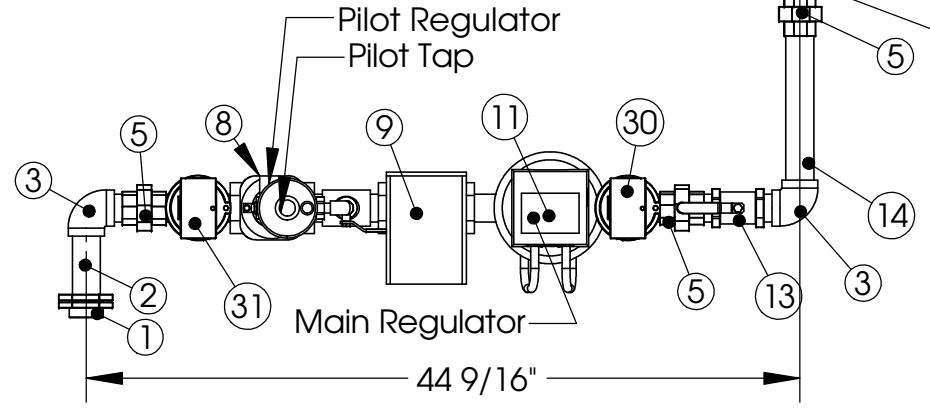
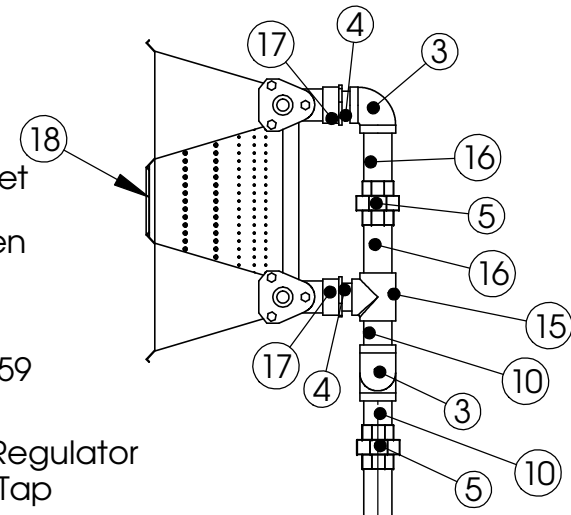
Gas Type: Natural or LP
 Inlet Pressure: 7 in. w.c. - 5 psi.
 Max. Natural Gas Manifold Pressure: 5 in. w.c.
 Max. LP Manifold Pressure: 2.5 in. w.c.

External Ball Valve Shipped Loose in Control Cabinet

External High Gas Pressure Regulator Required when gas pressure exceeds 5 psi.:
 P/N = 243-8-2-1.5-OR-1-30 (25 psi. max.)

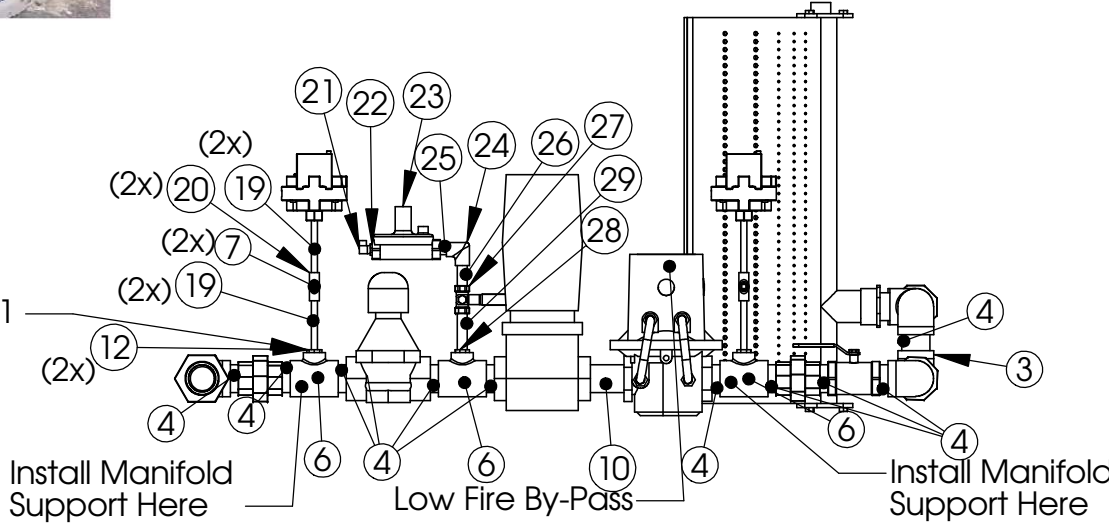
Item # 9 is replaced by V4055D1019 and V5055C1059 for Proof of Closure Applications

Item # 32 (not shown) used for burners built in house.



- 42026 3/8 U-Bolt, washer, and locknuts (2 Places)
- 5/16 Bolt, washer, and locknuts (2 Places)
- M1067H1M Bracket 2 Places
- 5/16 x 3/4 Self Tapping Sheet Metal Screws 2 PLaces

Pilot Solenoid, Regulator, & Manual Valve Location for MN State Requirements
 Regulator P/N: 325-3x3/8
 Solenoid P/N: V4046C1021



Notes:
 1) Burners riveted together with 3/16" rivets.
 2) Burner Cement used at all casting joints only.

Material: N/A	Part Number: N/A	Unless Otherwise Specified Dimensions are in Inches. Standard Tolerances are: Fractions: ±1/16 Decimal: .XX±.05 .XXX±.015 Angles: ±1°
Blank Size: N/A x N/A	MACOLA/AX Number:	
Weight: N/A lbs	Drawing Name: DF 5 60 Inch Gas Train	
CONFIDENTIAL	Drawn By:	
	Parent Assembly: DF 5	
	Sheet: 2 of 2	