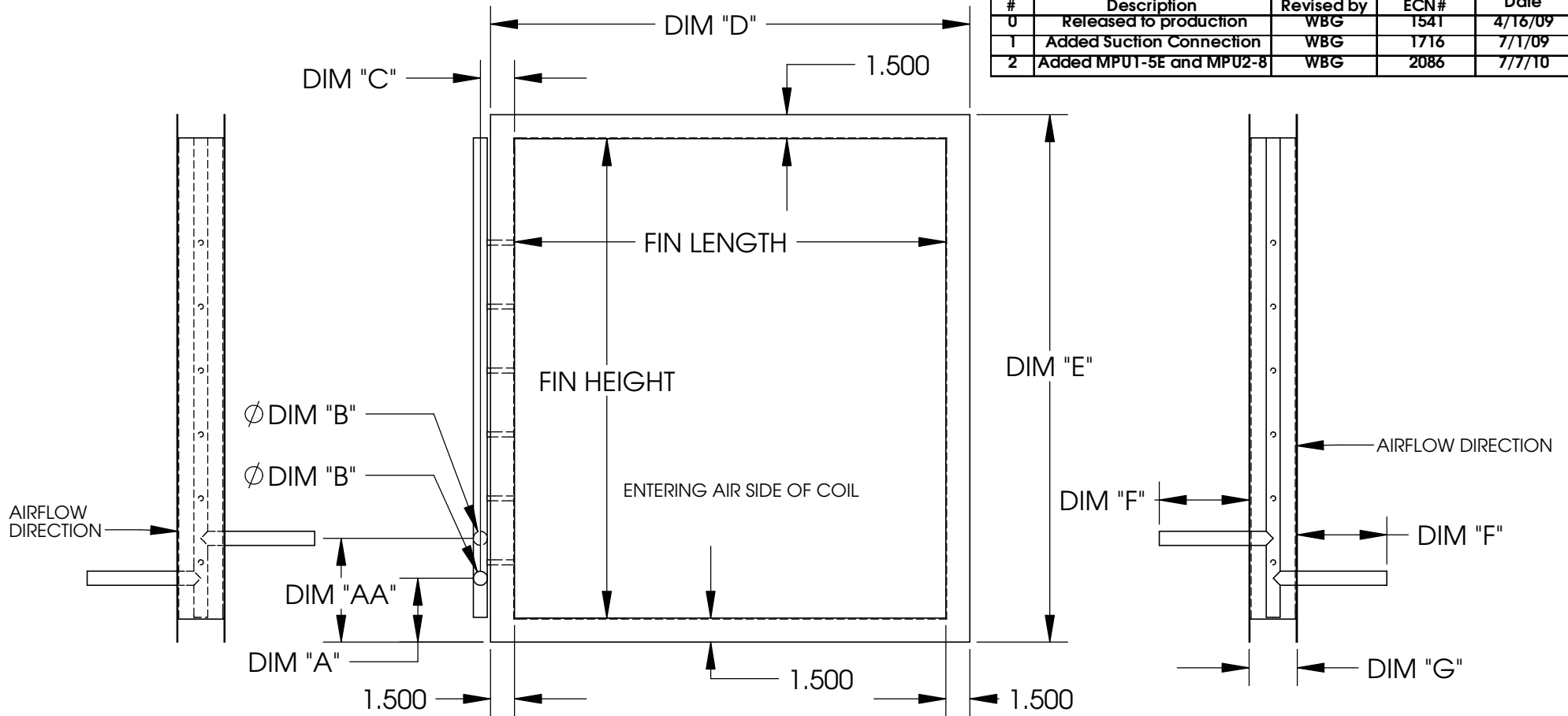


Revision History				
#	Description	Revised by	ECN#	Date
0	Released to production	WBG	1541	4/16/09
1	Added Suction Connection	WBG	1716	7/1/09
2	Added MPU1-5E and MPU2-8	WBG	2086	7/7/10



Single Circuit DX Information			
ID	MPU1-2	MPU1-3	MPU2-5
FIN HEIGHT	30	30	36
FIN LENGTH	27	27	36
DIM "A"	4	4	4
DIM "AA"	6.5	6.5	6.5
DIM "B"	0.75	0.875	0.875
DIM "C"	2.13	2.13	2.13
DIM "D"	30	30	39
DIM "E"	33	33	39
DIM "F"	5.62	5.62	5.62
DIM "G"	3.01	3.01	3
TONNAGE	2	3	5
# OF CIRCUITS	1	1	1
LIQUID SIZE	0.5	0.5	0.625
HEATCRAFT #	2EZ0801M	2EZ1001N	3EZ1001R

- Notes:
- 1) Distributor tubing bent toward leaving air side of coil.
 - 2) Liquid connection points vertically upwards. 3 inch extensions brazed to distributor.
 - 3) All suction connections to be capped. Cut suction tube required for MPU configuration.

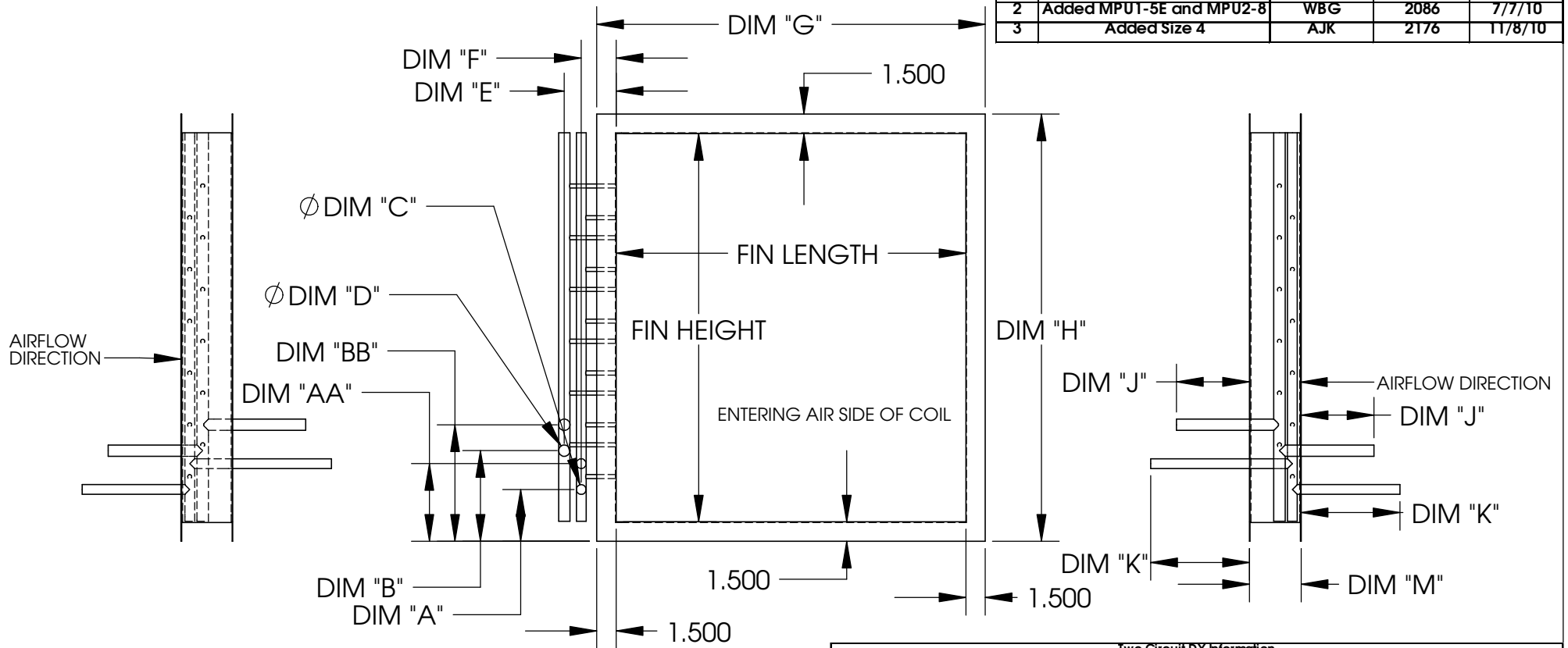
Material: N/A
Blank Size: N/A x N/A
Weight: N/A lbs

Part Number: N/A
MACOLA Number: N/A
Drawing Name: MPU DX Coil
Drawn By: WBG
Parent Assembly: MPU
Sheet: 1 of 3

Unless Otherwise Specified
Dimensions are in Inches.
Standard Tolerances are:
Fractions: $\pm 1/16$
Decimal: $.XX \pm .05$
.XXX $\pm .015$
Angles: $\pm 1^\circ$

CONFIDENTIAL

Revision History				
#	Description	Revised by	ECN#	Date
1	Added Suction Connection	WBG	1716	7/17/09
2	Added MPU1-5E and MPU2-8	WBG	2086	7/7/10
3	Added Size 4	AJK	2176	11/8/10



Two Circuit DX Information							
ID	MPU1-5	MPU1-5E	MPU2-7.5	MPU2-8	MPU2-10	MPU3-10	MPU4-10
FIN HEIGHT	30	30	36	36	36	43	52.5
FIN LENGTH	27	27	36	36	36	42	48
DIM "A"	4	4	4	4	4	4	4
DIM "AA"	6	6	6	6	6	6	6
DIM "B"	7	7	7	7	7	7	7
DIM "BB"	9	9	9	9	9	9	9
DIM "C"	0.75	0.75	0.75	0.875	0.875	0.875	0.875
DIM "D"	0.875	0.75	0.875	0.875	0.875	0.875	0.875
DIM "E"	4	4	4	4	4	4	4
DIM "F"	2.69	2.69	2.69	2.69	2.69	2.69	2.69
DIM "G"	30	30	39	39	39	45	51
DIM "H"	33	33	39	39	39	46	55.5
DIM "J"	5.62	5.62	5.62	5.62	5.62	5.62	5.62
DIM "K"	7.62	7.62	7.62	7.62	7.62	7.62	7.62
DIM "M"	4	4	4	4	3.99	4.01	4
TOTAL TONNAGE	5	5	7.5	8	10	10	10
#1 TONNAGE	2	2.5	2.5	3	5	5	5
#2 TONNAGE	3	2.5	5	5	5	5	5
#1 LIQUID SIZE	0.5	0.5	0.5	0.5	0.625	0.625	0.625
#2 LIQUID SIZE	0.5	0.5	0.625	0.625	0.625	0.625	0.625
# OF CIRCUITS	2	2	2	2	2	2	2
HEATCRAFT #	2EZ0902M	2EZ0902M	3EZ1101C	3EZ1101D	3EZ0802B	3EZ0602M	4EZ0801C

- Notes:
- 1) Distributor tubing bent toward leaving air side of coil.
 - 2) Liquid connection points vertically upwards. 3 inch extensions brazed to distributor.
 - 3) All suction connections to be capped. Cut suction tube required for MPU configuration.

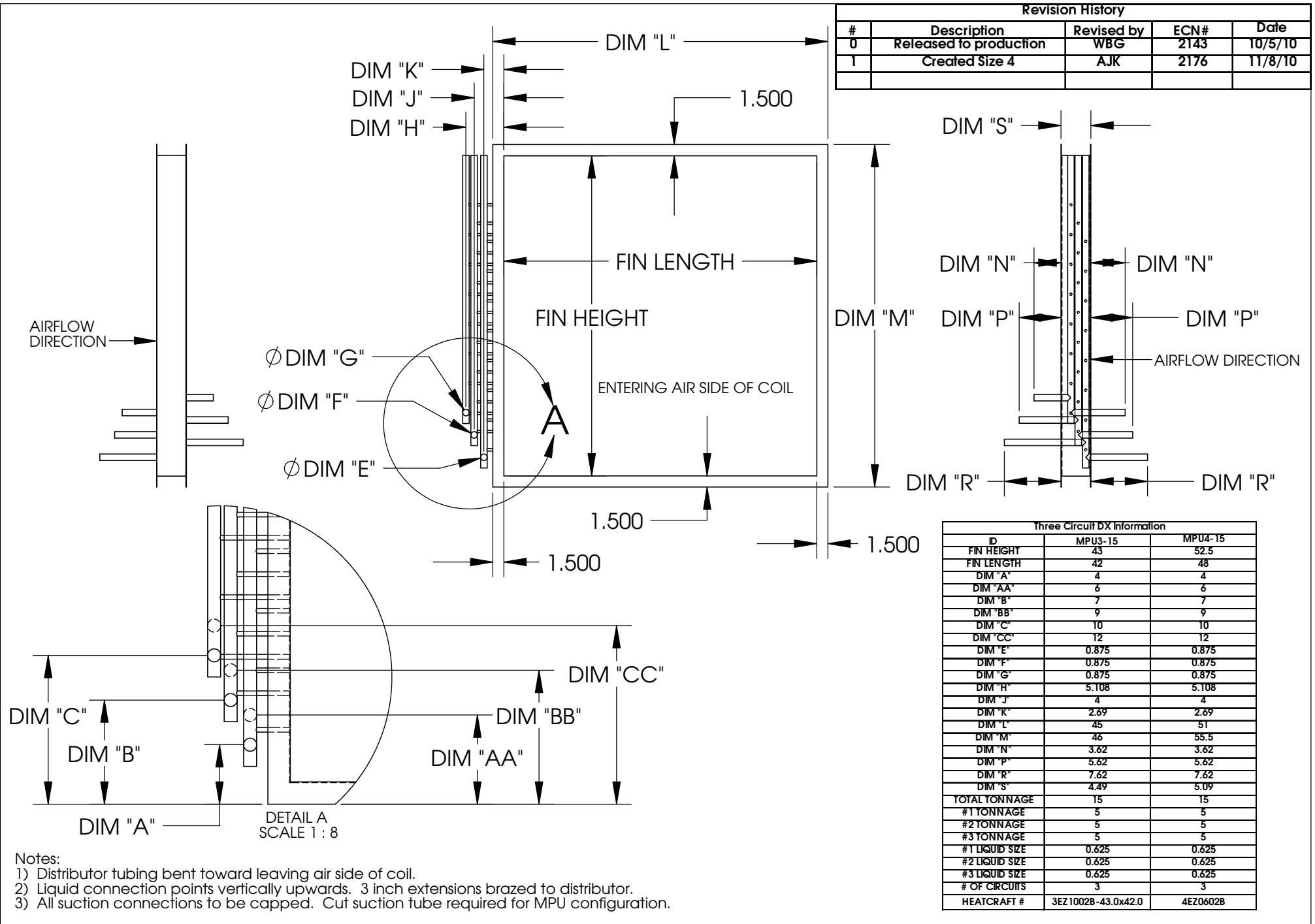
Material: N/A
Blank Size: N/A x N/A
Weight: N/A lbs

CONFIDENTIAL

Part Number: N/A
MACOLA Number: N/A
Drawing Name: MPU DX Coil
Drawn By: WBG
Parent Assembly: MPU
Sheet: 2 of 3

Unless Otherwise Specified
Dimensions are in Inches.

Standard Tolerances are:
Fractions: ±1/16
Decimal: .XX±.05
 .XXX±.015
Angles: ±1°



Revision History				
#	Description	Revised by	ECN#	Date
0	Released to production	WBG	2143	10/5/10
1	Created Size 4	AJK	2176	11/8/10

Three Circuit DX Information		
D	MPU3-15	MPU4-15
FIN HEIGHT	43	52.5
FIN LENGTH	42	48
DIM "A"	4	4
DIM "AA"	6	6
DIM "B"	7	7
DIM "BB"	9	9
DIM "C"	10	10
DIM "CC"	12	12
DIM "E"	0.875	0.875
DIM "F"	0.875	0.875
DIM "G"	0.875	0.875
DIM "H"	5.108	5.108
DIM "J"	4	4
DIM "K"	2.69	2.69
DIM "L"	45	51
DIM "M"	46	55.5
DIM "N"	3.62	3.62
DIM "P"	5.62	5.62
DIM "R"	7.62	7.62
DIM "S"	4.49	5.09
TOTAL TONNAGE	15	15
#1 TONNAGE	5	5
#2 TONNAGE	5	5
#3 TONNAGE	5	5
#1 LIQUID SIZE	0.625	0.625
#2 LIQUID SIZE	0.625	0.625
#3 LIQUID SIZE	0.625	0.625
# OF CIRCUITS	3	3
HEATCRAFT #	3EZ1002B-43.0x42.0	4EZ0602B

- Notes:
- 1) Distributor tubing bent toward leaving air side of coil.
 - 2) Liquid connection points vertically upwards. 3 inch extensions brazed to distributor.
 - 3) All suction connections to be capped. Cut suction tube required for MPU configuration.

Material: N/A	Part Number: N/A	Unless Otherwise Specified Dimensions are in Inches.
Blank Size: N/A x N/A	MACOLA Number: N/A	
Weight: N/A lbs	Drawing Name: MPU DX Coil	
CONFIDENTIAL	Drawn By: WBG Parent Assembly: MPU Sheet: 3 of 3	
		Standard Tolerances are: Fractions: ±1/16 Decimal: .XX±.05 .XX±.015 Angles: ±1°